

20.5mm Push To Lock B376



Product Description

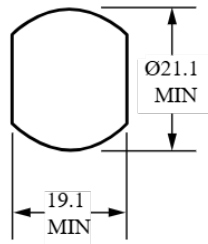
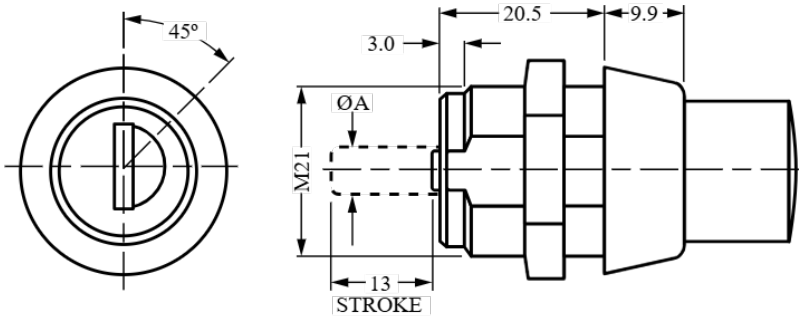
A range of 20.5mm Push to Locks available in bright nickel. The push to lock action makes this lock ideal for use in various applications including wooden and metal furniture.

- **Lock Combinations:** 200
- **Standard finish:** Bright nickel
- **Fixing hole shape:** Double D
- **Stroke length:** 13mm

Options

Product Code	Key Series	Combinations	Head Shape	Head Depth	Housing Fixing	Finish	Version	Lock Type	Stroke	Body Length
B376	89	200	Conical	9.9	Nut Fixing	Bright Nickel	Shuttered	Push to lock	13	20.5
B620	89	200	Conical	9.9	Nut Fixing	Bright Nickel	Shuttered	Key to lock	13	20.5
B640	89	200	Conical	9.9	Nut Fixing	Bright Nickel	Standard	Push to lock	13	20.5
B888	89	200	Conical	9.9	Nut Fixing	Bright Nickel	Shuttered	Push to lock	13	20.5

Technical Drawing



FIXING HOLE SIZE